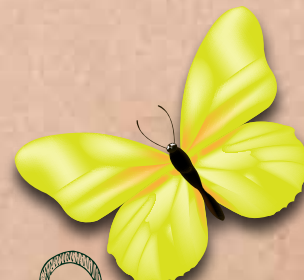




E-Nini-Hassee

The  
First Name in  
Second  
Chances  
for Girls.





***The Most Trusted and Established  
Outdoor Therapeutic Program for Girls***

Located on 840 acres of tranquil woodlands just one hour from Tampa and Orlando, Eckerd Connects' E-Nini-Hassee campus combines an array of educational, therapeutic and outdoor adventure services that provide opportunities for healing and restoration of girls and their families.



# At-A-Glance

**Founded:** 1969

**Profile:** Girls ages 12 – 18

**Common Diagnoses:** ADD, ADHD, depression, bi-polar, impulse control, mood disorder, social anxiety, substance abuse and issues related to social media

**Licenses & Certifications:** Council on Accreditation of Services for Children & Families; Licensed Level II Residential Substance Abuse Treatment; AdvancED™ — Southern Association of Colleges and Schools Council on Accreditation and School Improvement (SACS CASI)

**Therapeutic:** Strength-based, non-punitive group process model emphasizing Cognitive Behavioral Therapy, Reality Therapy, self-awareness, accountability, responsibility and therapeutic outdoor adventures

**Academics:** Accredited on-campus school with certified teachers and transferable credits

**Website:** [www.EckerdHelpsGirls.org](http://www.EckerdHelpsGirls.org)

**Address:** 7027 E. Stage Coach Trail, Floral City, FL 34436

**Phone:** 888.726.3883

**E-mail:** [admissions@eckerd.org](mailto:admissions@eckerd.org)



## Accreditations:





● "The folks at every level of Eckerd have  
 ● simply gone far above and beyond the  
 ● call of duty...the life skills my daughter  
 ● has already embraced and digested are  
 ● exactly that — a game changer. Part of  
 ● the Eckerd program is to reconstruct the  
 ● foundation of these girls to give them a  
 ● solid base to build their life around and  
 ● effective coping skills to deal with the  
 ● complexities of growing up in today's  
 ● environment. Honestly, I have never  
 ● been associated with a more caring and  
 ● talented group of people than the folks at  
 ● Eckerd E-Nini-Hassee"

— Keith K.





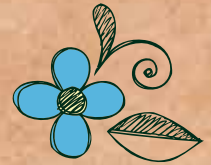
# Why Choose E-Nini-Hassee?



- ✧ **Most Established and Trusted** — We are the most established and trusted outdoor therapeutic program for girls in the Southeastern United States, consistently identified as one of the most effective programs of its kind in the nation.
- ✧ **Focus on Long-Lasting Change** — Since 1969, we've helped nearly 10,000 girls turn their lives around by using group process to increase sense and helping them discover the spark that ignites their hopes, dreams and desire for a positive, successful future.
- ✧ **Highly Experienced Team of Professionals** — The longevity of our professional staff is almost unheard of in the therapeutic industry. Many have worked here for nearly two decades and are highly experienced in mentoring girls and providing them with interventions at critical emotional and behavioral junctures.
- ✧ **Parent Recommended** — More than 90% of parents are completely satisfied with our services and would recommend E-Nini-Hassee to families who need treatment.



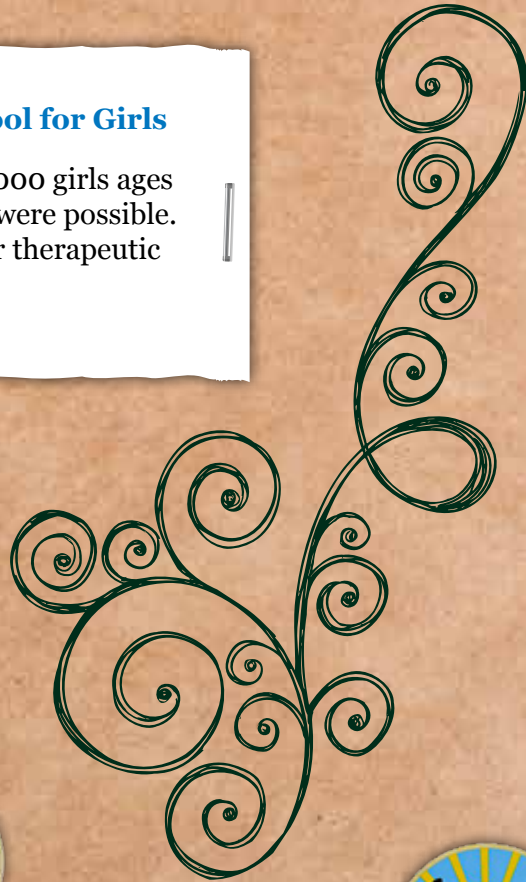
# Helping Girls Reach Their Full Potential



## Most Established and Trusted Therapeutic School for Girls

For 50 plus years, E-Nini-Hassee has helped nearly 10,000 girls ages 12 – 18 achieve successful futures they never dreamed were possible. In fact, we are the most trusted and established outdoor therapeutic program for girls in the Southeast, specializing in:

- ✿ Abuse and neglect
- ✿ Adoption issues
- ✿ Attachment issues
- ✿ Anxiety disorders
- ✿ Bipolar disorder
- ✿ Depression
- ✿ Hopelessness
- ✿ Low self-esteem
- ✿ Poor peer choices
- ✿ Post traumatic stress
- ✿ Relationship problems
- ✿ School failure
- ✿ Substance abuse





## Her Sunny Road

At E-Nini-Hassee, girls learn vital leadership, teamwork, communication and problem-solving skills they will use for the rest of their lives. They'll also develop the self-awareness, sense of self and competence needed to navigate the tough road from adolescence to adulthood. In fact, that's why we are named E-Nini-Hassee, which means "Her Sunny Road" in the Seminole Indian language.



Care



Support



Love



"When I came to E-Nini-Hassee a few days before my 17<sup>th</sup> birthday, I had the belief that everything I was going through wasn't my fault. I blamed a lot of other people for the mistakes I had made, and it was causing me to make a lot more destructive choices. While I was at E-Nini-Hassee, I had the opportunity to rethink all that I had done, and it helped me turn my life around. The program gave me the chance to quit my old lifestyle and start over, doing things that I actually wanted to be doing. I met people who changed my life and gave me motivation. They inspired me and pushed me to be a better person. Today, I'm happier with myself, and my choices, and my life. I'm so grateful I had this experience before I got in over my head. I love E-Nini-Hassee and what it did for me. I'll never forget what I learned there. It will be part of me for the rest of my life."

— Olivia D.





# Therapeutic Services

## Focus on Long-Lasting Positive Change

E-Nini-Hassee provides an effective therapeutic environment to address the issues of girls at-risk who have generally not succeeded in other types of treatment. The E-Nini-Hassee approach is evidence-based and child focused, utilizing Cognitive Behavioral Therapy counseling with an emphasis on self-awareness, and the development of problem solving, communication, coping and socialization skills.

Using Reality Therapy and Choice Theory, our behavioral management model is aimed at helping girls make good choices because they are internally motivated to do the right thing, not because they are rewarded through artificial systems or means. Real life demands that young people make sound decisions even when no clear rules or rewards for behavior exist.

Helping girls develop accurate self-awareness is the foundation upon which girls can sustain long-lasting changes required for healthy relationships, academic accomplishments, effective decision-making, and successful careers. To increase self-awareness, our girls engage in a variety of therapeutic activities and reflective practices to discover what they do well, their passions and to evaluate their guiding principles, values, and beliefs. Our staff are highly experienced and trained in providing girls with timely and accurate feedback and assisting them in overcoming thinking errors and self-defeating behaviors that may get in their way of success.

Our program also utilizes and stresses the importance of a positive peer culture and group process in treatment. Under supervision of trained Counselor Teachers, each girl learns she has not only individual responsibility, but a responsibility to others as well.

Surrounding this therapeutic framework are several evidence-based treatment approaches to include Trauma-Focused Cognitive Behavioral Therapy, Reality Therapy, Motivational Interviewing and concepts from the highly acclaimed "8 to Great Approach to Positive Life Change", "Voices" and "Seeking Safety" a substance abuse curriculum.

Mind

Body

Spirit



# Education Services


## Encouraging Emotional and Academic Growth

Because behavioral problems are often intrinsically linked with academic challenges, the entire therapeutic team is integrated to include teachers, counselor teachers, and clinicians all focused on one goal – each girl's success.

Because no two girls or families are exactly alike, each girl receives an individualized academic and therapeutic plan designed to address her unique and specific needs based on formalized, nationally-recognized assessments that we administer. Our on-campus school serves grades 6 thru 12 and is accredited through AdvancED: Southern Association of Colleges and Schools.

Our curriculum is aligned with state and national Department of Education guidelines. All students gain skills and knowledge developed within a traditional liberal arts curriculum, including English, Math, Science, Social Studies, Health, PE and the Arts. Course objectives are taught through thematic instruction with an emphasis on experiential learning and small student/teacher ratios to encourage students to progress at their own rate. Integrated into the curriculum are other experiential activities for academic growth, improved self-concept, spiritual awareness and service to the community.

Our students regularly achieve significant academic during their stay. In addition, all academic credits earned are transferable.



"I see  
the Moon  
and the  
Moon sees me..."





☆ ...and the moon  
sees the one I  
long to be"







"Your program literally saved my daughter's life, and I will be eternally grateful to the entire staff and counselors there. My daughter has stayed out of trouble since completing your program, is working and also preparing to graduate high school before she went to E-Nini-Hassee and was given the tools to help her make the conscious decision to turn her life around. Thank you, thank you, thank you for giving my daughter a second chance at a productive life."

— Trish R.





# Admissions

Parents and/or professionals may make referrals to E-Nini-Hassee by contacting the Admissions Department at **888.726.3883** or by visiting **[www.EckerdHelpsGirls.org](http://www.EckerdHelpsGirls.org)**.

E-Nini-Hassee operates year-round and offers rolling admissions to serve girls who have shown significant difficulty functioning in social, family and/or school environments, and whose emotional and behavior problems have been unresponsive to treatment involving a less intensive level of care.



**EckerdHelpsGirls.org**

**888.726.3883**





My daughter has come a long way since leaving ENini-Hassee... I am so grateful that she had this opportunity to turn her life around, and I truly believe it was because of ENini-Hassee. I would hate to think where she would be now if she didn't attend - a very scary thought I must say.

You are the best!

~ Lisa C.







E-Nini-Hassee

*A Proven*  
**Approach to**  
*Helping Girls*  
**Succeed**

(888) 726-3883 • [EckerdHelpsGirls.org](http://EckerdHelpsGirls.org)

“Dreams don’t work  
unless you do.”



E-Nini-Hassee

7027 E. Stage Coach Trail  
Floral City, FL 34436  
(888) 726-3883  
admissions@eckerd.org

[www.EckerdHelpsGirls.org](http://www.EckerdHelpsGirls.org)

A program of Eckerd Connects, a national nonprofit leader that has helped more than 230,000 children, young adults and families have much-needed second chances to succeed.

No person shall, on the basis of race, color, religion, national origin, sex, age, or disability be excluded from participation in, be denied the benefits of, or be subjected to unlawful discrimination under any program or activity receiving or benefiting from federal financial assistance administered by Eckerd Connects. Foreign language and sign-language interpreters will be made available at no charge to the client. This school is authorized under Federal law to enroll nonimmigrant students.

Eckerd Connects is a 501 ( c ) ( 3 ) not-for-profit equal opportunity employer. Sponsored by Eckerd Connects and the state of Florida Department of Children and Families.